

# Endoscope

Endo Vision Of Life



**OTTO Medical  
Technologies GmbH**

Add Rudolf-Diesel-Strasse 2  
40670 Meerbusch Germany

Tel +49(2159)992 9933 Fax +49(2159)992 9935

Email [info@ottomedical.com](mailto:info@ottomedical.com) Web [www.ottomedical.com](http://www.ottomedical.com)





Combination of clinical needs and our accumulated experience over the years, we are constantly updating the product performance, improving product quality, and presenting our customers with unparalleled visual images:

- **Stainless Steel Tube**  
High quality stainless steel tubing allows us to get the best quality and strength of the endoscope.
- **Excellent Image Quality and Color Rendition**  
Over the years, OTTO Medical has been continuously improving its optical design to optimize parameters to achieve optimal brightness, contrast and resolution for endoscopes.
- **Full High Definition Version**  
OTTO Medical Full HD Endoscope delivers high-definition vision for your entire HD screen!
- **Customization**  
We have independent R&D team that can design endoscopes economically according to your requirements. We offer a wide range of advice and support to achieve customer satisfaction as much as possible.

OTTO Medical Endoscope can easily connect to most fiber optic cables on the market and all our fiber optic cables. The endoscope is equipped with a fiber optic cable adapter (Karl Storz, Olympus, Richard Wolf, ACMI).

**OTTO Medical is dedicated to helping healthcare professional perform their jobs more efficiently while enhancing patient care.** To be an original equipment manufacturer, the company has its own professional research and development team, which focus on endoscope system and related medical devices.

**The feature of our product is design and quality.** Any research and development of products is inseparable from cooperation with clinicians. Through understanding

of their needs when doctor have clinical operations and continuous dialog with experts’ opinions, customers’ and associates’ needs, from design to optimizing, OTTO Medical strives to make their ideas into reality and make them to be satisfied.

**Perfect Vision, presented by OTTO Medical.**



## Catalog

### • Laparoscopy

Laparoscope	05
Single Puncture Laparoscope	05

### • Multifunction Endoscope

- M-ENDO 1	06
------------	----

### • Gynecology

Operational Hysteroscope- INTEGRATED UNIT	09
Hysteroscope	10

### • Urology

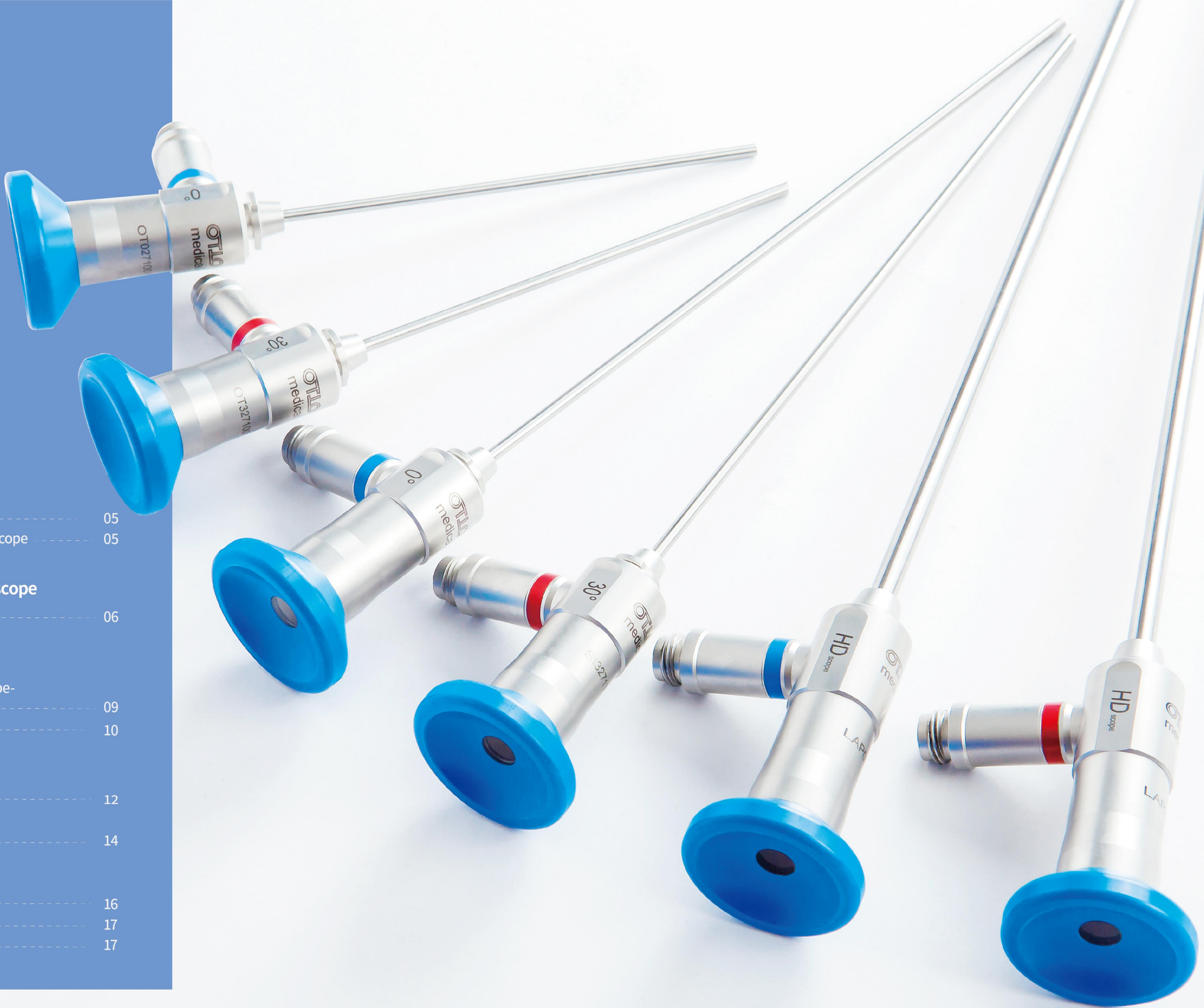
Cystoscope	12
------------	----

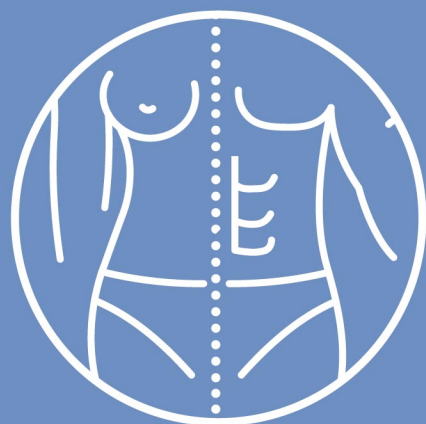
### • Arthroscopy

14

### • E.N.T

Sinuscope	16
Otoscope	17
Laryngoscope	17





# Laproscopy

▼  
Laparoscope

▼  
Single Puncture Laparoscope.

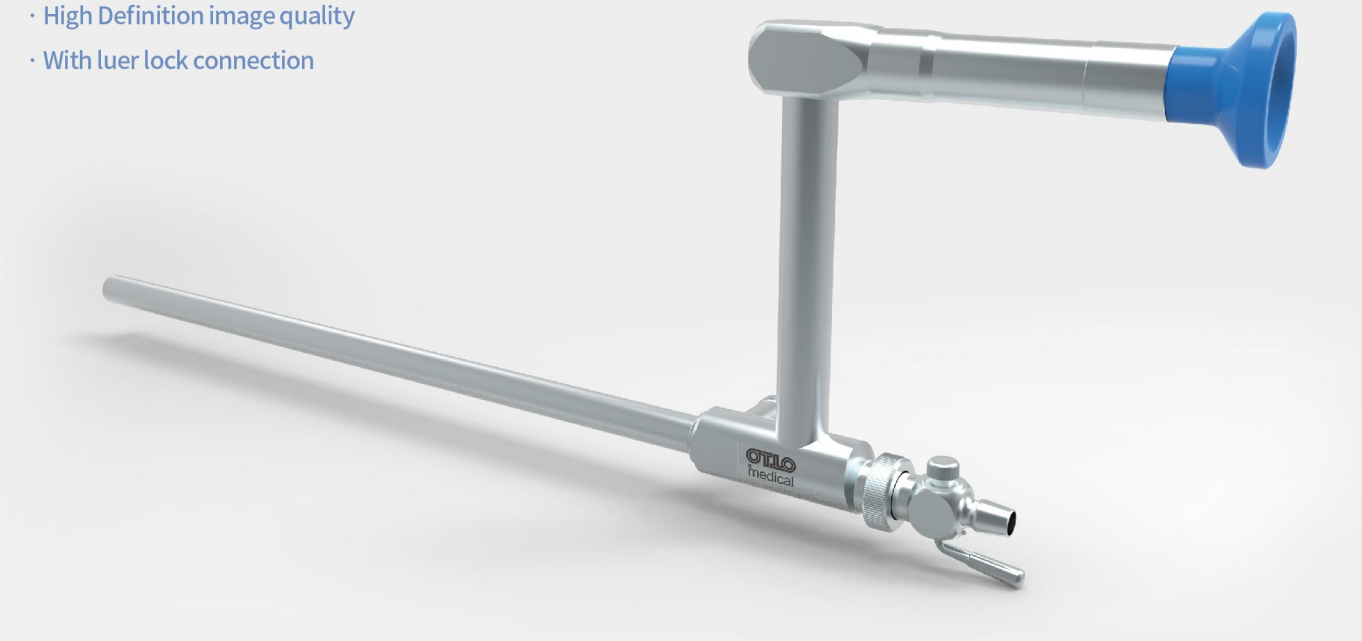
## Laparoscope

Item No	Endoscope ø	Working Length	Direction of View	Field of View
13.01	10mm HD	330mm	0°	standard
13.31	10mm HD	330mm	30°	standard
13.05	5mm HD	292mm	0°	standard
13.35	5mm HD	292mm	30°	standard

## Single Puncture Laparoscope

Item No	Endoscope ø	Working Length	Direction of View	Instrument Channel ø
13.0110	11mm HD scope	270mm	0°	6mm

- High Definition image quality
- With luer lock connection



Note .





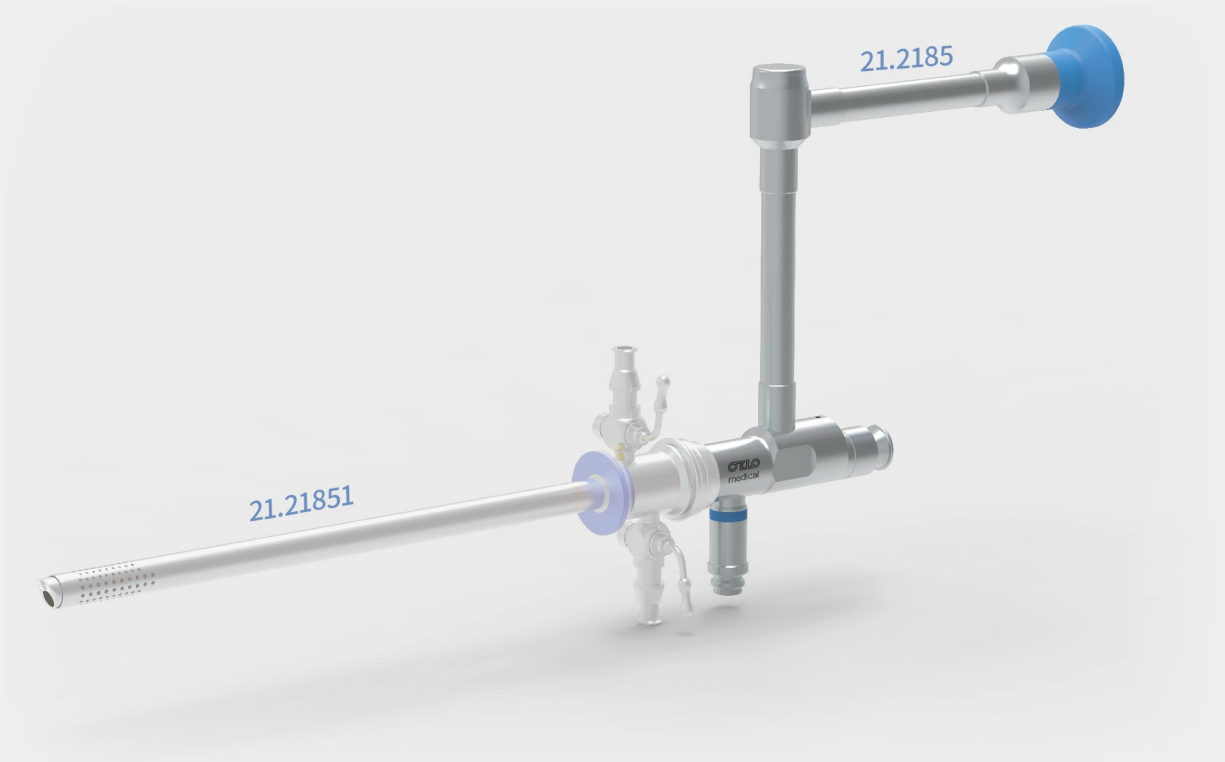


Multifunction Endoscope- M-ENDO 1

Multi Function, Simple Operation

As a multifunctional Endoscope, M-ENDO 1 is not only used for urology, but also for treatment of numerous gynecological problems, such as polypectomy, hysterectomy, and endometrial ablation can be performed.

- 360 degree rotatable and prevent cervical dilation effectively
- Instrument and resector can be interchangeable through the working channel, and the sheath of M-ENDO 1 is universal for resectoscope, so the operating efficiency will increase significantly.
- With parallel eyepiece, the tissue is removed at the same time during the resection, it can be better observed during the operation.
- Unique instrument channel design, avoid leakage from misoperation



Item No	Working Length	Direction of View	Outer Sheath	Instrument Channel
21.2185	185mm	20°	26Fr	15Fr

Item No	Product	Specification
21.21851	Sheath	26Fr
21.21852	Obturator	

Note .





# Gynecology

▼  
Operational Hysteroscope - INTEGRATED UNIT  
▼  
Hysteroscope



## Operational Hysteroscope - INTEGRATED UNIT

Integrated design prevent the hysteroscope from damage during operation effectively. High flow capacity, continuous flow and 360 degree rotatable are highlights of the product.

Item No	Working Length	Direction of View	Outer Sheath	Instrument Channel
21.3206	206mm	30°	16Fr	7Fr

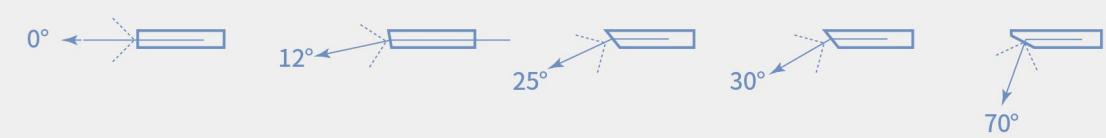
Note .



Hysteroscope

Item No	Endoscope ø	Working Length	Direction of View	Field of View
21.004	4mm	302mm	0°	standard
21.124	4mm	302mm	12°	standard
21.254	4mm	302mm	25°	standard
21.304	4mm	302mm	30°	standard
21.704	4mm	302mm	70°	standard
22.004	4mm	302mm	0°	wide angle
22.124	4mm	302mm	12°	wide angle
22.254	4mm	302mm	25°	wide angle
22.304	4mm	302mm	30°	wide angle
22.704	4mm	302mm	70°	wide angle
21.029	2.9mm	302mm	0°	standard
21.129	2.9mm	302mm	12°	standard
21.329	2.9mm	302mm	30°	standard
21.729	2.9mm	302mm	70°	standard
22.029	2.9mm	302mm	0°	wide angle
22.129	2.9mm	302mm	12°	wide angle
22.329	2.9mm	302mm	30°	wide angle
22.729	2.9mm	302mm	70°	wide angle

Note .



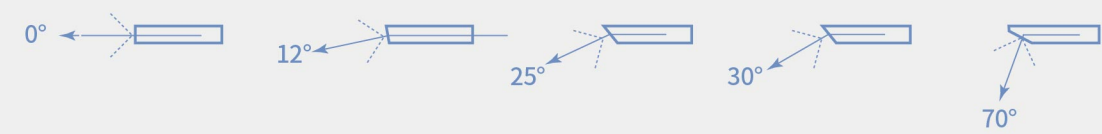
Urology

▼  
Cystoscope

Cystoscope

Item No	Endoscope ø	Working Length	Direction of View	Field of View
21.004	4mm	302mm	0°	standard
21.124	4mm	302mm	12°	standard
21.254	4mm	302mm	25°	standard
21.304	4mm	302mm	30°	standard
21.704	4mm	302mm	70°	standard
22.004	4mm	302mm	0°	wide angle
22.124	4mm	302mm	12°	wide angle
22.254	4mm	302mm	25°	wide angle
22.304	4mm	302mm	30°	wide angle
22.704	4mm	302mm	70°	wide angle
21.029	2.9mm	302mm	0°	standard
21.129	2.9mm	302mm	12°	standard
21.329	2.9mm	302mm	30°	standard
21.729	2.9mm	302mm	70°	standard
22.029	2.9mm	302mm	0°	wide angle
22.129	2.9mm	302mm	12°	wide angle
22.329	2.9mm	302mm	30°	wide angle
22.729	2.9mm	302mm	70°	wide angle

Note .



Arthroscopy

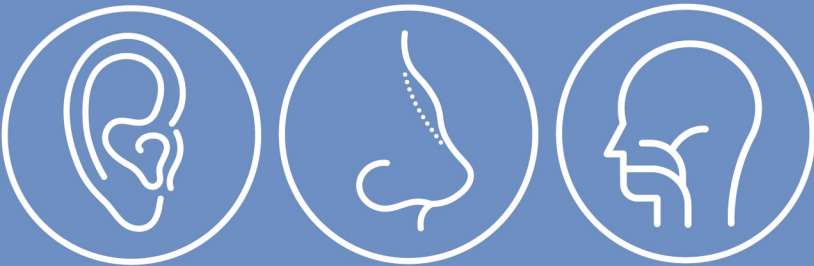
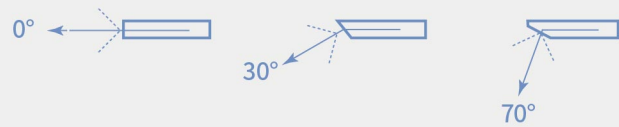
▼  
Arthroscope



Arthroscope

Item No	Endoscope ø	Working Length	Direction of View	Field of View
33.04175	4mm	175mm HD	0°	standard
33.34175	4mm	175mm HD	30°	standard
33.74175	4mm	175mm HD	70°	standard
31.04175	4mm	175mm	0°	standard
31.34175	4mm	175mm	30°	standard
31.74175	4mm	175mm	70°	standard
32.04175	4mm	175mm	0°	wide angle
32.34175	4mm	175mm	30°	wide angle
32.74175	4mm	175mm	70°	wide angle
32.02914	2.9mm	140mm	0°	wide angle
32.32914	2.9mm	140mm	30°	wide angle
32.72914	2.9mm	140mm	70°	wide angle

Note .



E.N.T

▼  
Sinuscope

▼  
Otoscope

▼  
Laryngoscope

Sinuscope

Item No	Endoscope ø	Working Length	Direction of View	Field of View
33.040175	4mm HD	175mm	0°	standard
33.340175	4mm HD	175mm	30°	standard
33.440175	4mm HD	175mm	45°	standard
33.740175	4mm HD	175mm	70°	standard
31.040175	4mm	175mm	0°	standard
31.340175	4mm	175mm	30°	standard
31.454175	4mm	175mm	45°	standard
31.740175	4mm	175mm	70°	standard
32.040175	4mm	175mm	0°	wide angle
32.340175	4mm	175mm	30°	wide angle
32.454175	4mm	175mm	45°	wide angle
32.740175	4mm	175mm	70°	wide angle
31.029175	2.9mm	175mm	0°	standard
31.329175	2.9mm	175mm	30°	standard
31.729175	2.9mm	175mm	70°	standard
31.027175	2.7mm	175mm	0°	standard
31.327175	2.7mm	175mm	30°	standard
31.727175	2.7mm	175mm	70°	standard
32.02914	2.9mm	140mm	0°	wide angle
32.32914	2.9mm	140mm	30°	wide angle
32.72914	2.9mm	140mm	70°	wide angle

Note .



Otoscope

Item No	Endoscope ø	Working Length	Direction of View	Field of View
31.0291	2.9mm	100mm	0°	standard
31.3291	2.9mm	100mm	30°	standard
32.7291	2.9mm	100mm	70°	standard
32.0296	2.9mm	60mm	0°	standard
32.3296	2.9mm	60mm	30°	standard
32.7296	2.9mm	60mm	70°	standard
33.0405	4mm HD	50mm	0°	standard
33.3405	4mm HD	50mm	30°	standard
33.7405	4mm HD	50mm	70°	standard

Laryngoscope

Item No	Endoscope ø	Working Length	Direction of View	Field of View
31.75	5mm	175mm	70°	standard
31.76	6mm	175mm	70°	standard
31.78	8mm	175mm	70°	standard
31.98	8mm	175mm	90°	standard
33.76	6mm HD	175mm	70°	standard
33.78	8mm HD	175mm	70°	standard

Note .

